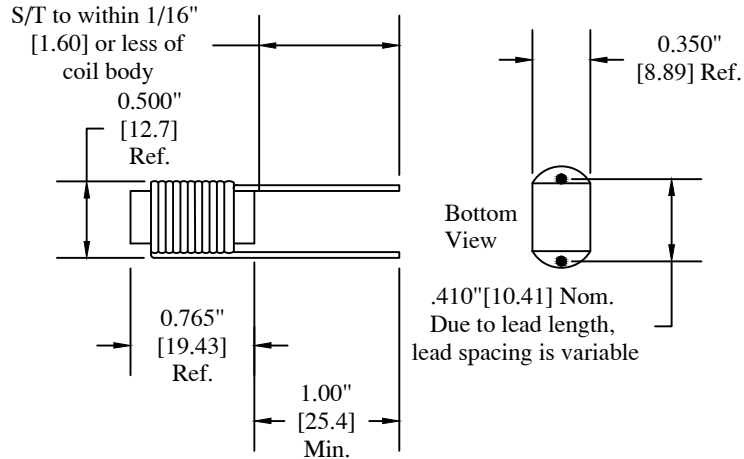


- ECONOMY HIGH CURRENT INDUCTORS RATED BETWEEN 0.42A - 13AD.C.
- INDUCTANCE RANGE FROM 0.9 μ - 1000 μ H.
- LEADS TINNED TO WITHIN 0.063"[1.6mm] OF THE CORE.

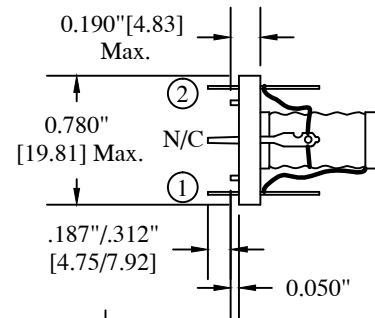


OPTIONS:

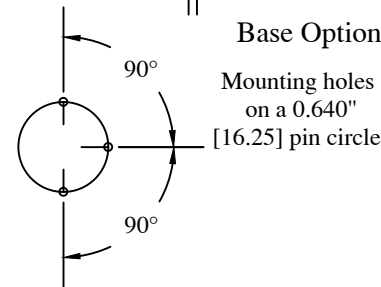
- A = Plastic Dip
- B = 94VO 3-term base (two used). Base diameter 0.780"[19.81] max.
- C = Shield can supplied with unit
- D = Mounted on 94VO base and shield can supplied with unit
- E = For High Voltage applications
- F = Foam pad to raise part 0.062" above PC board
- O = No options. Plain self leads as shown.

Notes:

- 1. Shield can will reduce "L" up to a maximum of 15%



Base Option B



BASE OPTION B:

- Base diameter .780"[19.81] max.
- 3 Terminals on .640"[16.25] diameter circle at 90°
- 0.050" [1.27] reference standoffs above board
- Base height above board = 0.190"[4.83] maximum

ALUMINUM SHIELD CAN OPTION C:

- Can height above board 1.09"[27.69] maximum
- Can Diameter = 0.900"[22.86] maximum
- Can Lug mounting 0.895" +/- 0.010" [22.73 +/- .254] between centers
- Can Lugs 0.060" [1.52] wide x 0.016" [.406] thick
- Can standoff above board 0.030" [7.62]

PREM P/N	ELECTRICAL PARAMETERS			NOMINAL LEAD DIAMETER
	Nominal DCR	INDUCTANCE	DC AMPS	
SPE-100	0.003 Ω Max.	1.5 μ H	12	0.064"
SPE-101	0.004 Ω Max.	2.0 μ H	10	0.057"
SPE-102	0.005 Ω Max.	3.0 μ H	8.5	0.051"
SPE-103	0.006 Ω Max.	3.5 μ H	7.0	0.045"
SPE-104	0.007 Ω	4.2 μ H	5.5	0.040"
SPE-105	0.010 Ω	10 μ H	4.3	0.036"
SPE-106	0.017 Ω	20 μ H	4.3	0.036"
SPE-107	0.022 Ω	28 μ H	3.4	0.032"
SPE-108	0.031 Ω	34 μ H	2.6	0.029"
SPE-109	0.046 Ω	50 μ H	2.1	0.050"
SPE-110	0.069 Ω	100 μ H	2.1	0.050"
SPE-111	0.090 Ω	125 μ H	1.7	0.045"
SPE-112	0.120 Ω	160 μ H	1.35	0.040"
SPE-113	0.200 Ω	250 μ H	1.0	0.035"
SPE-114	0.252 Ω	350 μ H	1.0	0.035"
SPE-115	0.369 Ω	500 μ H	0.85	0.032"
SPE-116	0.486 Ω	600 μ H	0.67	0.030"
SPE-117	0.668 Ω	750 μ H	0.53	0.025"
SPE-118	0.779 Ω	1000 μ H	0.42	0.025"
SPE-119	0.003 Ω Max.	0.9 μ H	13.0	0.064"

DATE	ISS	REVISION	CHECKED

Mech - Elect SPE-100 Series

Notes

ALL DIMENSIONS FOR REFERENCE ONLY

[] = millimeters

PREM

MAGNETICS INCORPORATED
3521 N. CHAPEL HILL RD.
JOHNSBURG, IL 60051

Mech - Elect PREM
PART # SPE-100
THROUGH SPE-119

Approved: TJK

Scale: NONE

Date: 10/27/2015